



TM

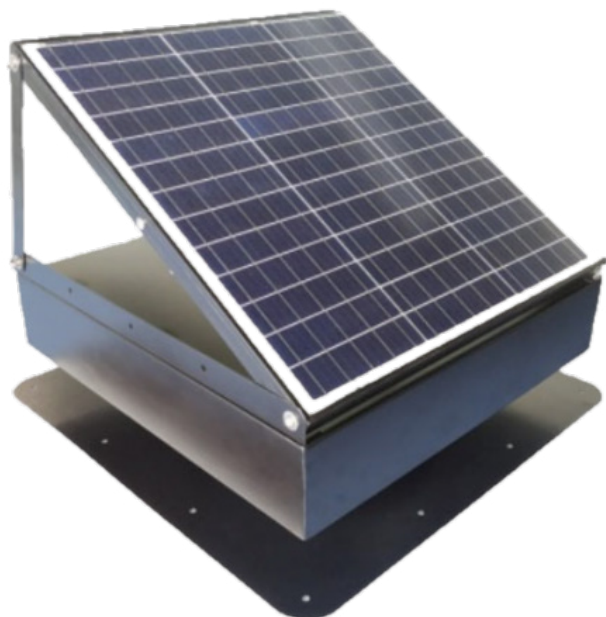
# SPECIFICATIONS

## iSolar 40W-INT-SUN

### Solar Powered Attic Fan

THE NEXT GENERATION IN SOLAR VENTILATION BY ISOLAR SOLUTIONS

## iSolar 40W-INT-SUN



A one-piece roof mount, high performance solar hybrid attic fan capturing natural solar power, creating efficient ventilation with a quiet brushless motor. An energy-saving green solution for a healthy and comfortable home environment.

100% solar-powered. The iSolar Attic fan refreshes stale overheated attic air with no electricity required. Wind-driven rain and hurricane endurance tested.

- Prevents moisture and harmful mold and mildew
- Extends the lifespan of roofing materials
- Reduces strain on air-conditioners
- Balances indoor temperature

### Compact, Strong Construction, Flexible Design

Fully assembled solar roof fan comes with adjustable solar panel on top and strong hot dip galvanized steel base and hood, finished with anti-UV epoxy resin spray coating, compact design all in one unit. Detachable mounting plate for easy installation. No maintenance. Stainless steel guard and screws.

- Power:** 40W, 24V DC Solar
- Solar Panel:** Monocrystalline, Fixed, Black Edge, Aluminum Frame 495x495x25 mm (19.5x19.5x1 in.)
- Fan:** (5) x 35.6 cm (14") Aluminum Alloy High Pitch Blades
- Air Movement:** 2040 CFM \*
- Animal Guard:** 304 Stainless Mesh
- Top Shroud Cover/Fan Housing/Base:** 1.2 mm Hot Dip Galvanized steel with antirust, anti-UV epoxy resin spray coating to prevent corrosion and color fading
- Colour:** Black
- Fan/Air Duct Size:** 365 mm (14")
- Option 1:** Adjustable Solar Panel Kit
- Option 2:** 110VAC Adapter with Auto Power Recognition, Automatic Thermal Switching with Preset Thermostat Set to 25C/77F (on) and 18C/64F (off)
- Packaging:** 570x570x230 mm (22.5x22.5x9 in.)
- Weight:** 14kg. (31lbs.)
- Application:** Attics
- Warranty:** 20 years limited



### External Rotor Brushless DC Motor Specification

- Voltage:** 24V
- Power:** 40W DC and 110VAC Adapted
- Size:** Fan Diameter, 365mm (14")
- Motor Speed:** 1450 RPM
- Intrusion Protection:** IP68 High Performance External Rotor Motor (simultaneous bearing and housing rotation, waterproof and dust-proof)
- Material:** Pure Copper, High Quality Ball Bearings
- Quietness:** < 45 dB



\* Due to lack of industry standards, CFM is often quoted as the maximum peak output of a bare fan in laboratory conditions.