

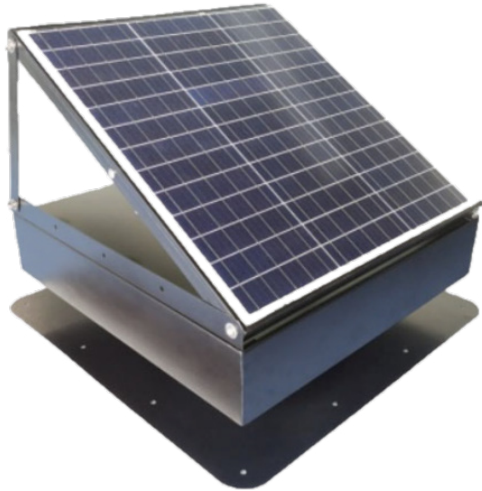


SPECIFICATIONS

iSolar 40W-INT-SUN

by iSolar Solutions

iSolar 40W-INT-SUN



A one-piece roof mount, high performance solar hybrid attic fan capturing natural solar power, creating efficient ventilation with a quiet brushless motor. An energy-saving green solution for a healthy and comfortable home environment.

100% solar-powered. The iSolar Attic fan refreshes stale overheated attic air with no electricity required. Hybrid AC adapter included for continuous operation. Wind-driven rain and hurricane endurance tested.

- Removes moisture and harmful mold and mildew
- Extends roofing materials lifespan
- Reduces strain on air-conditioners
- Balances indoor temperature

Compact. Strong Construction. Flexible Design

Fully assembled solar roof fan comes with adjustable solar panel on top and strong hot dip galvanized steel base and hood, finished with anti-UV epoxy resin spray coating, compact design all in one unit. Detachable mounting plate for easy installation. No maintenance. Stainless steel guard and screws.

- Power:** 40W DC Solar and 110 VAC Adapter with Auto Power Recognition and 5 meters (16 ft.) of power cord
- Solar Panel:** Monocrystalline, Hinged, Black Edge, Fully Adjustable, Aluminum Frame 495x495x25 mm (19.5x19.5x1 in.)
- Fan Blades:** (5) x 35.6 cm (14") Aluminum Alloy High Pitch Blades
- Animal Guard:** 304 Stainless Mesh
- Top Shroud Cover Fan Housing/Base:** 1.2 mm Hot Dip Galvanized steel with antirust, anti-UV epoxy resin spray coating to prevent corrosion and color fading
- Color:** Black
- Fan/Air Duct Size:** 365 mm (14")
- Automatic Thermal Switching:** Set to 25C (77F) (on) and 18C (64F) (off)
- Air Movement:** 2040 CFM *
- Packaging:** 570x570x230 mm (22.5x22.5x9 in.)
- Weight:** 14kg. (31lbs.)
- Application:** Attics
- Warranty:** 20 years limited



External Rotor Brushless DC Motor Specification

- Voltage:** 24V
- Power:** 40W DC and 110VAC Adapted
- Size:** Fan Diameter, 365mm (14")
- Motor Speed:** 1450 RPM
- Material:** Aluminum and plastic, high quality ball bearings.



- Intrusion Protection:** IP68 High Performance External Rotor Motor(simultaneous bearing and housing rotation, waterproof and dust-proof)
- Material:** Pure Copper, High Quality Ball Bearings
- Quietness:** < 45 dB

* Due to lack of industry standards, CFM is often quoted as the maximum peak output of a bare fan in laboratory conditions.